

Customer service contact email:  
customerservice@basicfun.com

basicfun.com

Basic Fun Social Media Pages

 @basicfuntoys

 facebook.com/basicfuntoys

Licensed By:



HASBRO and its logo, and LITE BRITE and its logo are trademarks of Hasbro and are used with permission. ©2023 All Rights Reserved.

The Basic Fun logo, product and package design ©2023 Basic Fun, Inc. BOCA RATON, FLORIDA 33431, USA. www.basicfun.com. All rights reserved. Manufactured under license. Basic Fun products are safety tested and comply with ASTM F963. MADE IN CHINA. TEL: 1-561-997-8901

Each sold separately, subject to availability. Colors and styles may vary from photos as we continue to modify and improve our products. ADULTS NOTE: Remove all tags and plastic fasteners before giving toy to child. Please keep this package and instruction sheet for future reference.

CAN ICES-3(B)/NMB-3(B) WARNING! Not suitable for children under 36 months, Small Parts. Choking hazard. Misuse of transformer can cause electrical shock.



**WARNING:**  
CHOKING HAZARD - Small Parts.  
Not for Children Under 3 years.

 **x3** 1.5 V AA/LR6  
**BATTERIES NOT INCLUDED**

#### LEGAL/ELECTRONICS SAFETY STATEMENTS

##### BATTERY INFORMATION

- Non-rechargeable batteries are not to be charged.
- Rechargeable batteries are only to be charged under adult supervision.
- Rechargeable batteries are to be removed from the toy before being charged.
- Different types of batteries or new and used batteries are not to be mixed.
  - Batteries are to be inserted with the correct polarity.
  - Exhausted batteries are to be removed from the toy.
  - The supply terminals are not to be short-circuited.

#### FCC STATEMENT

This device complies with Part 15 of the FCC Rules. Operation is subject to the following two conditions: (1) the device may not cause harmful interference, and (2) this device must accept any interference received, including interference that may cause undesired operation. Warning: Changes or modifications to this unit not expressly approved by the party responsible for compliance could void the user's authority to operate the equipment.

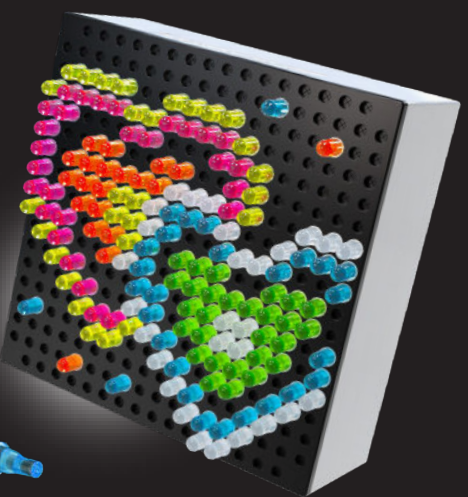
NOTE: This equipment has been tested and found to comply with the limits for a Class B digital device, pursuant to Part 15 of the FCC Rules. These limits are designed to provide reasonable protection against harmful interference in a residential installation. This equipment generates, uses, and can radiate radiofrequency energy, and if not installed and used in accordance with the instructions, may cause harmful interference to radio communication. However, there is no guarantee that interference will not occur in a particular installation. If this equipment does cause harmful interference to radio or television reception, which can be determined by turning the equipment off and on, the user is encouraged to try to correct the interference by one or more of the following measures:

- Reorient or relocate the receiving antenna.
- Increase the separation between the equipment and receiver.
- Connect the equipment into an outlet on a circuit different from that to which the receiver is connected.
- Consult the dealer or an experienced radio/TV technician for help.

Templates for multiple units can be found at [basicfun.com](http://basicfun.com).

**CONNECT**  
TO OTHER  
**Mini-X units!**  
\*EACH SOLD SEPARATELY

**Lite•  
Brite  
Mini-X  
Connect**



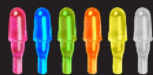
**INSTRUCTIONS**

# CONTENTS

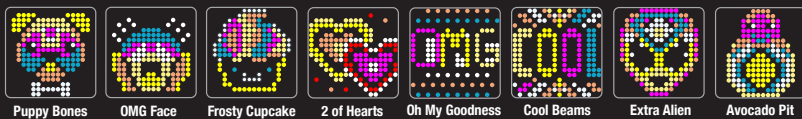


## 1 - MINI-X CONNECT UNIT

170 - MINI PEGS



8 - TEMPLATES



Puppy Bones    OMG Face    Frosty Cupcake    2 of Hearts    Oh My Goodness    Cool Beams    Extra Alien    Avocado Pit

1. 2.

# POWERING UNIT

The Lite-Brite Mini-X Connect unit is powered by 2 "AAA" batteries (not included).

## Installing Batteries

Using a Phillips/cross head screwdriver (not included),  
loosen the screws on the battery compartment cover  
(screws stay attached to cover).

Remove the cover. Insert 2 "AAA" Batteries (not included).

Alkaline batteries recommended.

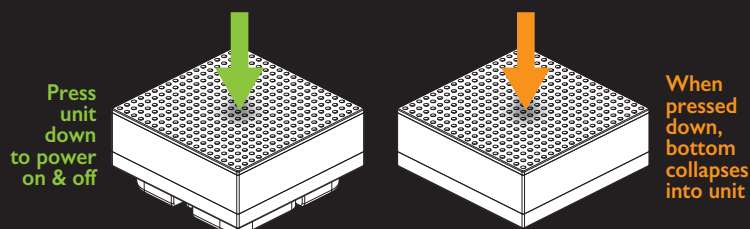
Replace cover and tighten the screws.

TIP: Build unit while power is off to preserve battery life.

# TURN ON/OFF UNIT

After installing your batteries,  
the Mini-X Connect is ready to light up.  
The front grid functions as a push button,  
and can be pressed down to power on.

To turn off the unit, simply press down on the grid again.



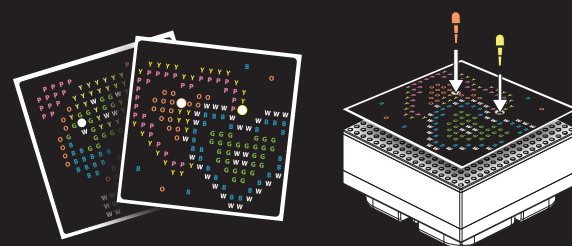
Press unit down to power on & off

When pressed down, bottom collapses into unit

3. 4.

# BUILDING YOUR ART

## USING TEMPLATES



1. Choose your desired template
2. Place the template on top of the grid
3. Put a peg into each of the precut holes to help stabilize your template.

# INSERTING PEGS

When building your art, insert the pegs on the matching color mark on the template. For example, Blue pegs go on areas marked with a blue "B".



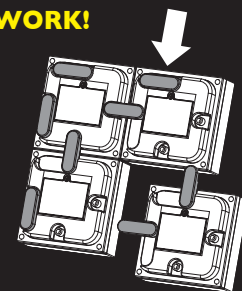
5. 6.

# CONNECTING UNITS

IF YOU HAVE MORE THAN ONE MINI-X CONNECT UNITS, YOU CAN CONNECT THEM TOGETHER TO EXPAND YOUR ARTWORK!



To connect units, use the fixed connector pieces in the back of the unit to connect to open slots on 2nd Mini-X Connect.



CONNECT AS MANY UNITS AS YOU LIKE!

Inspiration templates for multiple units can be found at [basicfun.com!](http://basicfun.com!)