

FRONT



GIANT ANT FARM[®] Antopia Rainforest Live Habitat

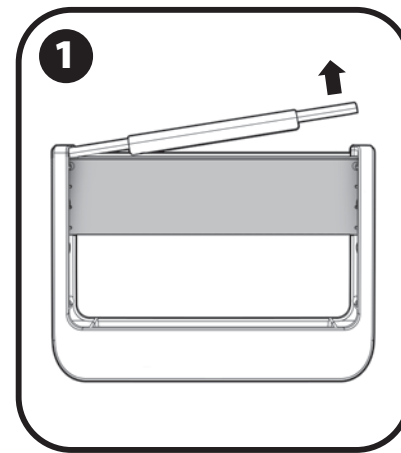
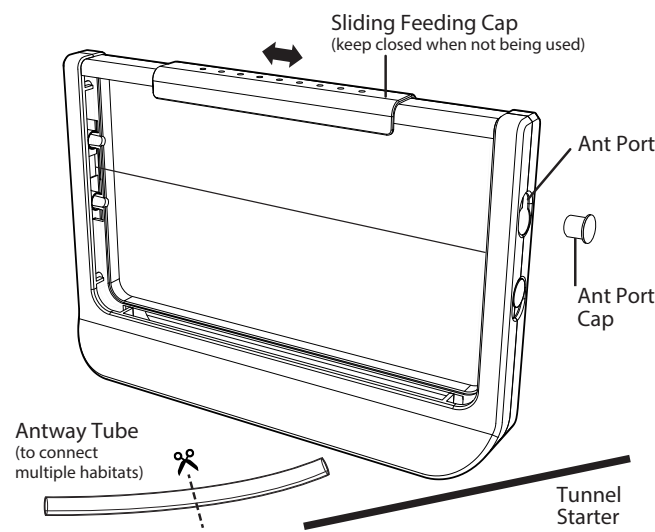
Order Online To Populate Your Live Ant Habitat

Go to www.unclemiltonstore.com to order your ants.

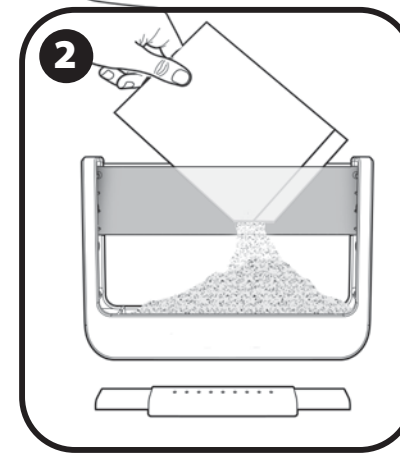
Select "2 vials of ants" and enter this as your discount code.

DISCOUNT CODE

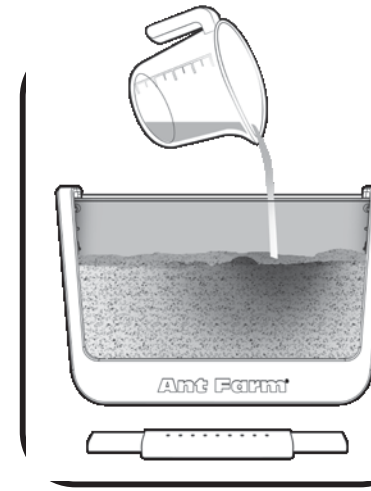
Ants can only be ordered within the USA



1 Lift Top Cover at one end to remove as shown.



2 Cut small corner off 1 bag of sand with scissors. Carefully pour into lower half of habitat as shown, filling sand just above the bottom edge of the scene. Store the second bag of sand for use at a later time or with another order of ants.



Slowly pour in about 6 oz. (3/4 cup or 18 cl) of clear drinking water. Sand should be evenly damp, but not soggy. Don't worry if a little water leaks out.

Ant Facts

Q: What do ants eat and drink?

A: Ants eat almost anything. They like unsalted crackers, cake, bread, fruit, meat, and leaves, just to name a few. Once a week, slide open the feeding port and drop in two or three pinhead size pieces of food. You will also need to give the ants a few drops of water every 2 days. Just slide open the feeding port and drop the water in. **Please do not overfeed or over water your ants!**

Q: Do the ants get enough air?

A: Yes. Your Ant Farm[®] habitat provides sufficient air through the air holes.

Q: Are there both male and female ants in a colony of workers?

A: No. All worker ants are females. The only male ants are the "princes." They mate with the queens and die soon after mating.

Q: Do ants take baths?

A: Yes. They are very clean. Watch them closely and you will see the ants rubbing their faces with their legs. They are cleaning themselves when they do that.

Q: Can ants "talk"?

A: Ants communicate primarily through their sense of smell. They emit chemical signals called "pheromones" which communicate specific information to other ants. The ants will pick up on the chemicals with their antennae which will tell them where the signal is coming from and how strong it is. Some ants can also communicate using sound by rubbing certain parts of their bodies together much like a cricket creates noises with its legs.

Q: Do ants work all the time?

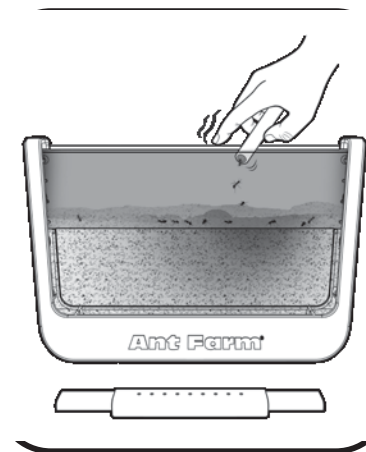
A: No. They work very hard, but they like to play, too, and they also rest. When they play, they bump and wrestle with each other. Sometimes two or three of them will roll a bit of grain or sand around like a ball.

Q: Will the ants build hills over the farm scene?

A: Yes. If they had a plain space, they would simply build plain hills. The farm scene gives them a more interesting place to work, and it is more fun to watch them.

Q: Do ants really know what they are doing and why they are doing it?

A: While each ant shows signs of distinct behavior, the ants themselves should not be thought of as individuals. Rather, an ant colony is like one large organism with many different functioning parts. Each ant has a set of duties that it will follow unquestioningly for its entire life.

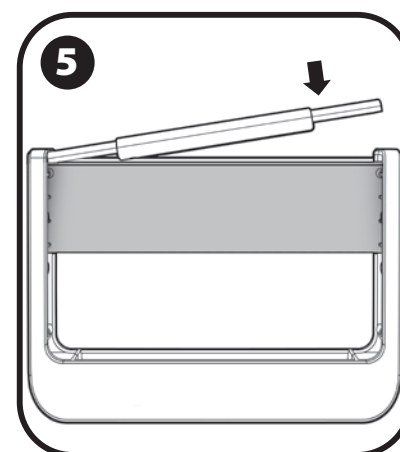


Before you open the tube of ants, put it in the refrigerator (not the freezer) for about 15 minutes. This makes them less active and much easier to put into the habitat. They will soon "warm up" to start working.

After removing the tube of ants from the refrigerator, gently tap the tube so they are all at the bottom of the tube.

Carefully open the tube and insert the end into the habitat as shown and tap/shake the ants from the tube into your Ant Farm habitat.

If the ants seem sluggish at first, this is normal. They are tired and thirsty from their long journey through the mail.



5 Replace top frame. Make sure it's evenly centered and snapped in.

KEEP THESE INSTRUCTIONS FOR FUTURE REFERENCE DO NOT DISCARD

Questions? Visit unclemilton.com

We will mail you an ample supply of Western Harvester ants (scientific name is *Pogonomyrmex*, meaning "bearded ants" because they appear to have little beards). These large ants are excellent diggers and make impressive tunnels in the sand.

Normally, we mail the ants to you within 2 to 5 weeks after we receive your order. But sometimes we delay them because it is too hot or too cold for them.

It's best for you to send for ants when the temperature is less than 85° F and above 32° F. If you have an outdoor mailbox, don't let the ants stay in there for too long. It may be too hot or cold for them!

If you want to, you can stock your habitat with ants right out of your own neighborhood. Look for large ants that cannot go through the air holes. Let the ants crawl up onto a stick without touching them. Remove the top frame and carefully shake the ants in.

CAUTION: NEVER HANDLE ANTS DIRECTLY. Ants are easily excited and may bite or sting to defend themselves. Like some other insect bites or stings, the bite of a harvester ant can be painful for a short time and temporary swelling may occur. For those who are more sensitive than others, it may take a little longer for symptoms to subside. If bitten, apply ice to the affected area. Consult a physician if symptoms persist. Remember, ants are living creatures, so treat them with RESPECT.

To Re-populate Your Ant Farm[®]

Welcome your new ants to a clean home. Take your habitat apart and sift the sand clean for dead ants and leftover food bits, or use new sand.

Rinse the plastic parts with water and blot dry (do not wipe – the clear parts can scratch easily).

Fill the reassembled habitat with clean dry sand and moisten as directed at the beginning of this manual.

You can order a re-population kit online at www.unclemilton.com

The re-population kit includes everything you need to use your Ant Farm[®] Habitats over and over again.



a registered trademark of TBDUM, LLC, a Basic Fun, Inc. company.



The Basic Fun logo, product and package design © 2018 BASIC FUN, INC. BOCA RATON, FLORIDA 33431, USA. TEL: 1-561-997-8901 www.basicfun.com. All rights reserved.

Basic Fun products are safety tested and comply with ASTM F963. Manufactured under license. MADE IN CHINA. Each sold separately, subject to availability. Colors and styles may vary from photos as we continue to modify and improve our products. ADULTS NOTE: Remove all tags and plastic fasteners before giving toy to child. Please keep this package and instruction sheet for future reference. WARNING! Not suitable for children under 36 months. Small Parts. Choking hazard.

